

Model 300BP

Diaphragm Seals for Flanged Off-Line Process Connections 3" (76.20mm) 150# and 3" (76.20mm) 300#

Process Connection Sizes

3" ASME/ANSI Flange Ratings 150# and 300#
Other flange ratings available, consult the factory

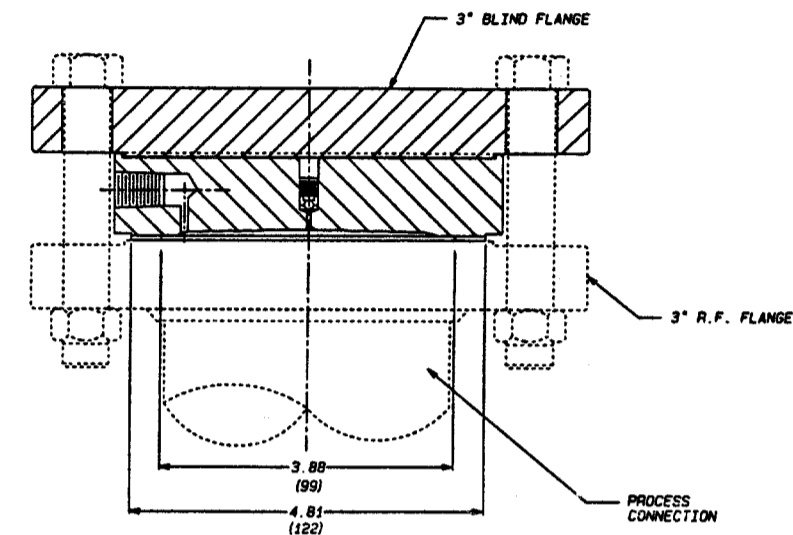
Maximum Working Pressure

Conforms to Flange Pressure-Temperature Ratings per ASME/ANSI B16.5

Flange Faces

Raised Face

Dimensional Data



() Dimensions in millimeters

Standard Features and Options

This flanged connection, off-line seal has a diaphragm welded to a stainless steel body. This design allows for the use of diaphragm materials that are of a weldable grade. The displacement capability of this series of diaphragm seal is 0.25 cubic inches utilizing a 4.81" (122.17mm) diameter diaphragm. These seals are designed for direct connection to standard raised face ASME/ANSI flanges in 3" (76.20mm) sizes, with 150# and 300# ratings. Available with or without blind mounting flanges. When a tantalum diaphragm is required the 300BP o-ring style is supplied. The seal-off feature is standard.

Offerings

Body Materials: 316 Stainless Steel

Blind Flange Materials: Carbon Steel or 316 Stainless Steel

Diaphragm Materials: All metallic except Tantalum

Instrument Connection: 1/4" or 1/2" NPTF

CONTROL ENGINEERING DATA

D5S6B 1 1 H 0 C 0 0 0 0 N

D5 S6 B 1 1 H 0 C 0 0 0 0 N

(3-4) BODY MATERIAL

S6 = 316 Stainless Steel

M4 = Monel 400 (See Note 1)

(1-2) DIAPHRAGM SEAL DESIGN

D5 = 300BP Flanged Pancake

(5) SEAL PROCESS CONNECTION

B = 3"

(6) SEAL FLANGE PRESSURE RATING (See Note 3)

1 = 150#

4 = 300#

(7) SEAL INSTRUMENT CONNECTION

1 = 1/4" NPTF with bleed

(8) SEAL DIAPHRAGM MATERIAL

H = Hastelloy B3

D = Hastelloy C-276

I = Inconel 600

M = Monel 400 (See Note 1)

N = Nickel 200

J = 316L Stainless Steel

(10) BLIND FLANGE MATERIAL (BACK-UP FLANGE)

C = Carbon Steel

S = 316 Stainless Steel

0 = Not Applicable (No back-up flange required)

(9) FUTURE OPTION

0 = Not Applicable

(11) FUTURE OPTION

0 = Not Applicable

(12) FUTURE OPTION

0 = Not Applicable

(13) TEFLON COATING (See Note 4)

0 = None (Standard)

A = Teflon Coated Diaphragm Only

(14) PLATING OPTIONS

0 = None (Standard)

G = Gold Plating Diaphragm Only

(15) FILL LIQUID

N = (Standard)

CATALOG NUMBERS AS RECEIVED FOR 300BP SERIES SEAL MUST CONTAIN FIFTEEN (15) CHARACTERS.

Notes:

- When a Monel diaphragm is chosen in position 8, then a Monel body is required.
- N.A.C.E. - Welded diaphragm seals with Hastelloy C-276 or Monel wetted materials of construction will meet the requirements of N.A.C.E. International Document MR-0175-1995. 316 Stainless Steel construction will NOT BE offered in a welded design as meeting N.A.C.E. MR-0175-1995 requirements as the weld area of the diaphragm seal will not meet the maximum hardness specifications within this document.
- Refer to Miscellaneous Data Section for Pressure-Temperature Rating Guide.
- Teflon-S® Coating (FEP Grade).

Model 300BP

Diaphragm Seals for Flanged Off-Line Process Connections Tantalum Diaphragm 3" (76.20mm) 150# and 3" (76.20mm) 300#

Process Connection Sizes

3" ASME/ANSI Flange Ratings 150# and 300#
Other flange ratings available, consult the factory

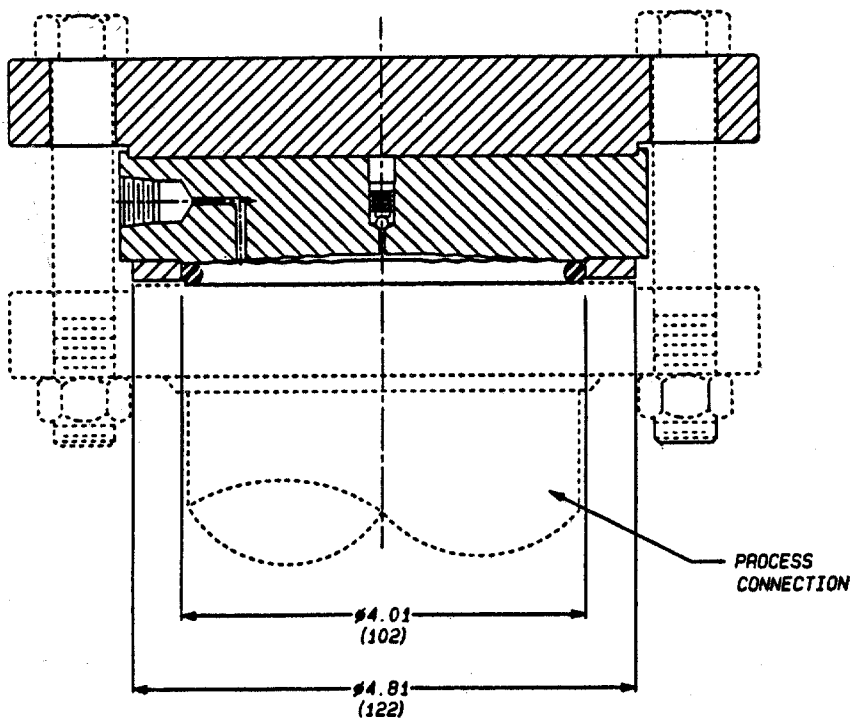
Maximum Working Pressure

Conforms to Flange Pressure-Temperature Ratings per ASME/ANSI B16.5

Flange Faces

Raised Face

Dimensional Data



() Dimensions in millimeters

Standard Features and Options

This flanged connection, off-line seal has a diaphragm welded to a stainless steel body. When tantalum diaphragms are required, the metallurgical properties prohibit the use of a weld ring as a gasketing surface. An o-ring supported by a non-wetted support ring is then used. The displacement capability of this series of diaphragm seal is 0.25 cubic inches utilizing a 4.00" (101.60mm) diameter diaphragm. These seals are designed for direct connection to standard raised face ASME/ANSI flanges in 3" (76.20mm) sizes, with 150# and 300# ratings. The standard o-ring material is Teflon. The seal-off feature is standard. Available with or without blind mounting flanges.

Offerings

Body Materials: 316 Stainless Steel

Blind Flange Materials: Carbon Steel or 316 Stainless Steel

Diaphragm Material: Tantalum

O-Ring Materials: Teflon, Buna N or Viton

Instrument Connection: 1/4" or 1/2" NPTF

CONTROL ENGINEERING DATA

D5S6 B 1 1 T Z C 0 0 0 0 N

- (15) FILL LIQUID
N = Not Filled
- (14) PLATING OPTIONS
0 = None (Standard)
- (13) TEFLON COATING (See Note 2)
0 = None (Standard)
A = Teflon Coated Diaphragm Only
- (12) FUTURE OPTION
0 = Not Applicable
- (11) FUTURE OPTION
0 = Not Applicable
- (10) BLIND FLANGE MATERIAL (BACK-UP FLANGE)
C = Carbon Steel
S = 316 Stainless Steel
0 = Not Applicable (No back-up flange required)
- (9) O-RING MATERIAL
Z = Teflon (Standard)
B = Buna N
V = Viton
- (8) SEAL DIAPHRAGM MATERIAL
T = Tantalum
- (7) SEAL INSTRUMENT CONNECTION
1 = 1/4" NPTF with bleed
- (6) SEAL FLANGE PRESSURE RATING (See Note 1)
1 = 150# RF
4 = 300# RF
- (5) SEAL PROCESS CONNECTION
B = 3"
- (3-4) BODY MATERIAL
S6 = 316 Stainless Steel
- (1-2) DIAPHRAGM SEAL DESIGN
D5 = 300BP Flanged Pancake

CATALOG NUMBERS AS RECEIVED FOR 300BP SERIES SEAL MUST CONTAIN FIFTEEN (15) CHARACTERS.

Note:

1. Refer to Miscellaneous Data Section for Pressure-Temperature Rating Guide.
2. Teflon-S® Coating (FEP Grade).